



Coffee Brief

Date: June 18, 2022

Preparedness Levels & Alaska Fire Activity

Alaska	3
National	2

Light Initial Attack Activity New Fires and Acres: 11 Fires 725 Acres
--

There are currently 13 staffed fires with 606 personnel. Yesterday's large fire growth was 80,000 acres.

Sources: National and AICC Situation Report

Resources

Aviation within Alaska	
Jumpship	5
Air Tactical	6
Air Tankers	3
Scoopers	
SEATS	14
Utility	7
T1 Helicopter	
T2 Helicopter	13
T3 Helicopter	6

Crews Committed within Alaska		
Type 1	1	AK
Type 2	6	AK
Type 2IA	3	AK
Module	1	AK
Type 1	10	L-48
Type 2		L-48
Type 2IA		L-48
Module		L-48
Total Crews	21	

AVIATION: 40 SMJ's available ~ 69 SMJ's committed. 2 additional SEAT's today.

CREWS: Nothing in addition to table.

MISCELLANEOUS:

AK IMT2 Black Team is currently in command of the Lime Complex.

AK IMT2 Green Team is currently in command of the East Fork incident.

Source: IROC Reports

Weather Summary

Thunderstorms will be a concern over Alaska for the next several days. There is enough moisture in place to ensure that the majority of these storms will be wet. Today's convection will be centered over South Central Alaska, the Copper River Basin, and the Interior, especially the central and eastern Interior. Isolated wet thunder is also possible over the Southeast Panhandle today. Thunder will redevelop again Friday and Saturday, with the focus of most concentrated activity moving into the northern Interior, thus leaving South Central and the Panhandle with no chance of lightning after today.

The overall wind pattern is not particularly strong today. However, there will be local southerly winds in the Alaska Range passes to around 30 mph. The footprint of these strong winds will be very localized just to the immediate areas in and downwind of the passes. These will diminish by the weekend.

Cooler temperatures and areas of rain are moving into Southwest Alaska from Bristol Bay today, and these conditions will persist into the weekend. The Southeast Panhandle will have another mostly sunny day, with clouds and patchy drizzle hugging the shore along the Gulf of Alaska. Clouds and areas of rain will spread over the Panhandle this weekend.

Temperatures will remain roughly around normal through the period. There is some chance of warmer weather by the end of next week, but confidence in such a development is not high.

Source: Alaska 7-Day Outlook

Fuels/Fire Potential

The sub-surface fuels across Alaska are now drying and warming to the point of impacting wildfire behavior. After several weeks when the driest fuels were concentrated over southwest Alaska, the current weather pattern favors additional drying to be most effective over the northeastern Interior. For mid-June, a ripening of the fuels over the upper reaches of the Yukon River is very typical.

The wind pattern will not be particularly strong for the next few days, so keep in mind that values of the Initial Spread Index today are not as high as they would be if the wind were stronger. Note that there is a small bull's-eye in the ISI values over the Alaska Range passes today reflecting the localized gusty south winds there.

Values of the Build-Up Index indicate that the ground is becoming ever more receptive to a new start triggered by lightning, and lightning is in the forecast each afternoon and evening for the next several days.

Cooler temperatures and areas of precipitation will moderate the state of the fuels over southwest Alaska where there has been so much wildfire activity in recent weeks.

Source: Alaska 7-Day Outlook

Fuels Status [Alaska Fire and Fuels Map](#)

A Fuels and Fire Behavior Advisory has been issue for Alaska.

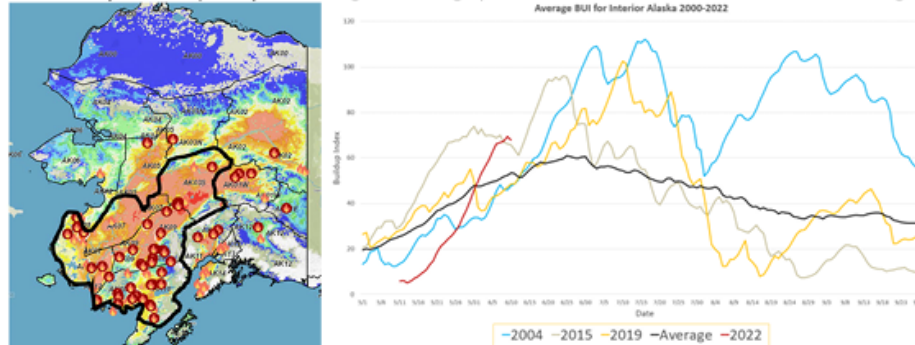
Fuels and Fire Behavior Advisory Southwest and Central Interior Alaska

Valid: June 12 – June 25, 2022

Subject: Exceptional landscape flammability and widespread ongoing large fire growth.

Discussion: The Buildup Index (BUI) is the best indicator of seasonal severity and overall flammability of fuels in Alaska. It represents deeper drying in the duff layers and greater fuel availability. Large fire growth occurs from mid-June to mid-July surrounding the summer solstice when long days and rapid drying can produce elevated BUI levels. Southwest Alaska normally experiences shorter periods of high flammability as they are prone to intermittent rain due to marine influences. Beginning in the middle of May, southwest Alaska has experienced continued hot, dry, and windy conditions, drying out fuels, retarding green-up and producing significant large fire growth. Many fires in southwest Alaska have experienced exceptionally large fire growth over the last week, which is unusual for the area.

Difference from normal conditions: The attached graph shows the current 2022 BUI trend for the Interior of Alaska compared to other busy fire seasons. 2022 has been above average BUI since May 31, and higher than 2015 levels since June 6. Southwest Alaska has already experienced abnormally large fire growth for this time of year. Multiple days of wetting rain adding up to more than one inch will be needed for lasting relief.



Concerns to Firefighters and the Public:

- Spruce stands are extremely flammable, will ignite readily, exhibit rates of spread more than one mile per hour, torch, and spot prolifically up to ¼ mile or more, and exhibit intense crown fire behavior.
- Temperatures above 80 degrees and RH below 30% are important thresholds for rapid spread and crown fire behavior.
- Green fuels are stressed and encouraging spread into riparian areas and less flammable hardwood forests.

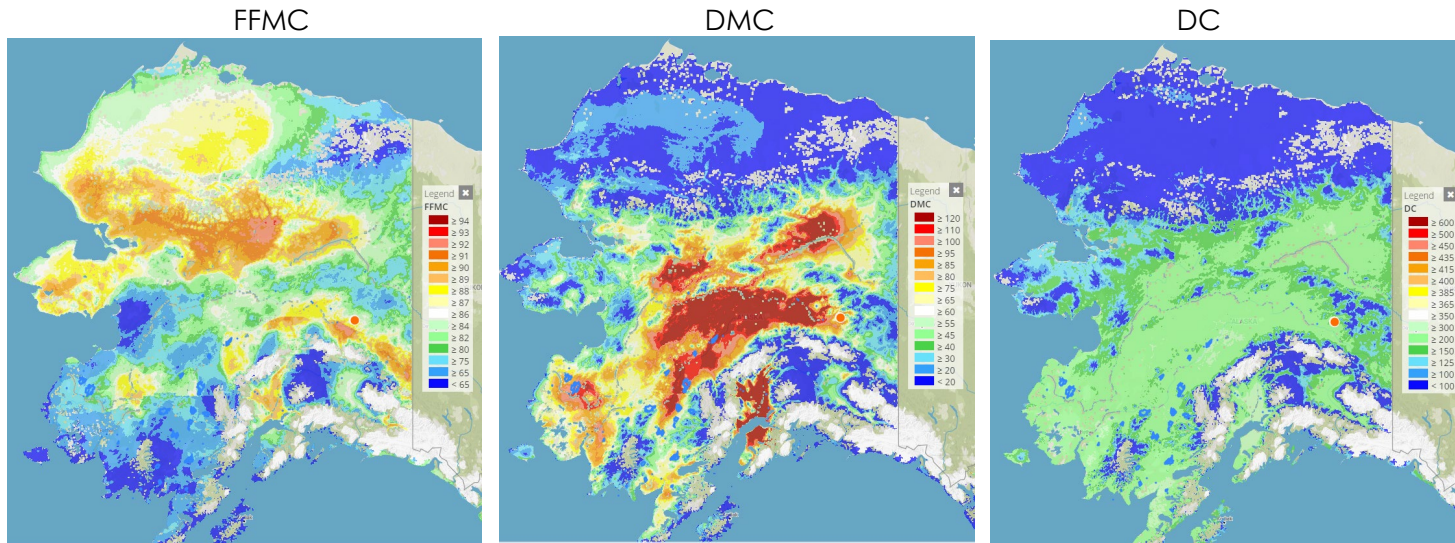
Mitigation Measures:

- Ensure that you can recognize hazardous fuel types including tundra that is exceptionally dry.
- Understand the triggers and thresholds for problem fire behavior.
- Monitor forecasts and indices to anticipate areas of increased flammability and extreme fire behavior.
- Maintain clear communications when working around active fires.

Area of Concern: Southwest Alaska, and the central Interior. Conditions over the next few weeks may spread to include a wider portion of Alaska.

Issued By: Alaska Interagency Coordination Center Predictive Services

Click on the following images for direct links to the maps.



For additional fuels information visit <https://akff.mesowest.org/>

Sources: AICC Predictive Services – Fuels/Fire Danger web page, Alaska Fire & Fuels web page

Prioritized Incident Details

This information will be available after the next AMAC meeting.

Source: AMAC Incident Prioritization List, ICS-209s

The Coffee Brief is posted at PLs 4 and 5 only.

